



# Caledonian

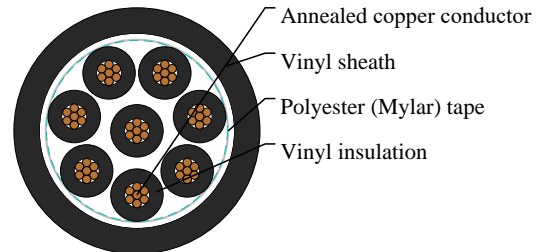
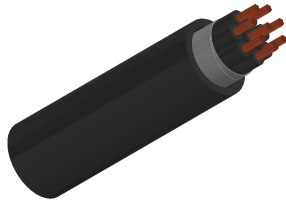
JIS Industrial Cables

www.caledonian-cables.com

marketing@caledonian-cables.com

## JIS C 3401 Cables

CVV 8C1.25



### APPLICATIONS

For supervisory electrical equipment, station control circuits, outdoor, suitable installation in dry or wet cable trenches.

### CABLE CONSTRUCTION

Conductor: Circular or compacted circular stranded annealed copper wires

Separator: A proper separator may be applied to a conductor

Insulation: Vinyl

Filler: Non-hygroscopic material(optional)

Binding tape: Polyester (Mylar) tape (optional)

Sheath: Vinyl, Black color

Name Code:

C: For control V: Vinyl V: Vinyl

### COLOUR CODE

Black core with marking numbers

### PHYSICAL AND THERMAL PROPERTIES

Maximum conductor temperature 90°C

Circuit voltage not exceeding 600 volts

Test voltage 2000 volts

### DIMENSION AND PARAMETERS

No. of Cores	Nominal Cross-sectional Area	No. and Dia. of Wires	Conductor Diameter	Nominal Insulation Thickness	Nominal Sheath Thickness	Approx. Overall Diameter	Approx. Weight	Max. DC Resistance at 20°C
	mm <sup>2</sup>	no./mm	mm	mm	mm	mm	kg/km	Ω/km
8	1.25	7/0.45	1.35	0.8	1.5	13.5	240	16.8